

## Question and Answers

### Dropped Off Patient / Designated Visitor Personal Items Food brought in facilities from/for healthcare workers

To further reduce the potential for community transmission of COVID-19 to our patients and staff, restrictions have been put in place in relation to personal items dropped off for patients and brought in by designated visitors and food for healthcare workers.

**\*This does not apply to patients being admitted to hospital (new admissions).**

### Dropped Off Patient and Designated Visitor Personal Items

#### 1. Is Horizon accepting personal items dropped off for patients, and can designated visitors bring in personal items?

Patient and/or designated visitor personal items will be accepted into the facility if they can be easily wiped and cleaned with a disinfectant, and meet the following revised screening criteria:

- Item is from a household where none of the occupants are on self-isolation **AND**
- Item can be easily cleaned and disinfected with a hospital provided wipe.

[Screening process attached](#)

The following are examples of accepted and not accepted items but is not all-inclusive list:

Accepted: (Easily cleaned and disinfected with a hospital provided wipe)	Not Accepted: (Cannot be cleaned and disinfected with a hospital provided wipe)
<ul style="list-style-type: none"> <li>• <b>Electronic devices and accessories</b> - Cell phones, laptops, tablets, E-readers, chargers</li> </ul>	<ul style="list-style-type: none"> <li>• <b>Clothing</b> – arrangements can be made with healthcare staff in advance if clothing is required for discharge</li> </ul>
<ul style="list-style-type: none"> <li>• <b>Food and beverages</b> in sealed manufacturer’s packaging (e.g.: granola and chocolate bars, bottled water and soda pop)</li> </ul>	<ul style="list-style-type: none"> <li>• <b>Food and beverages that are NOT in sealed manufacturer’s packaging and cannot be cleaned</b> (e.g.: paper coffee cups, food prepared at home)</li> </ul>
<ul style="list-style-type: none"> <li>• <b>Medical aids/equipment</b> – hearing aids, glasses, dentures in container,</li> </ul>	<ul style="list-style-type: none"> <li>• <b>Paper/cardboard products</b> – Books, magazines, newspapers, cards</li> </ul>

wheelchairs, braces, canes, walkers, baby car seat, etc.	
<ul style="list-style-type: none"> <li>• <b>Personal toiletries</b> in sealed manufacturer packaging (e.g.: toothpaste, toothbrush in package, shampoo, etc.)</li> </ul>	<ul style="list-style-type: none"> <li>• <b>Flowers</b></li> </ul>
<ul style="list-style-type: none"> <li>• <b>Footwear</b> that can be wiped cleaned</li> </ul>	

## Food brought in facilities from/for healthcare workers

### 2. What food can I bring into the facility?

- **Take-out food** from licensed establishments is permitted. The individual delivering the food will need to successfully pass the screening protocol at the facility's designated entrance before the food is accepted into the facility.

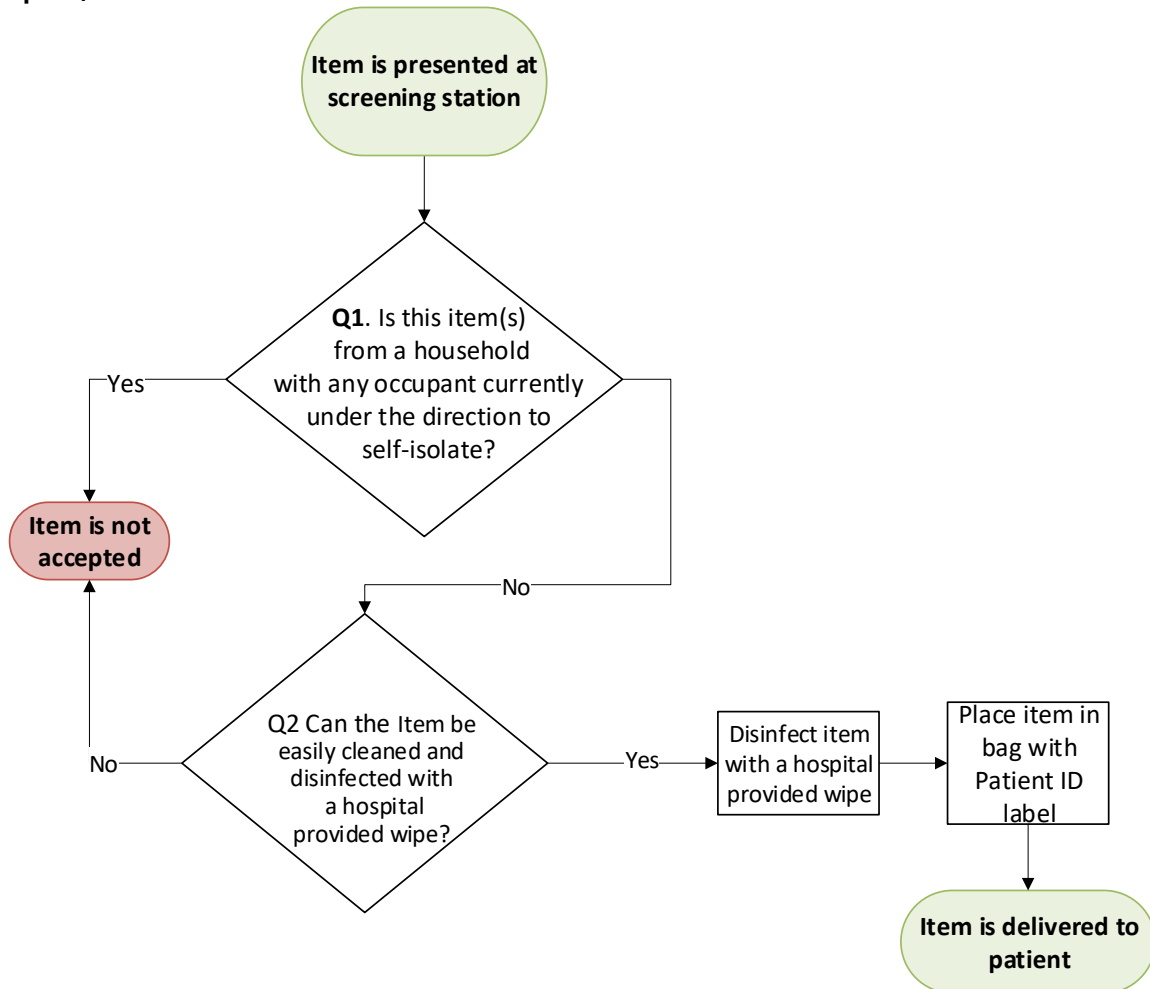
The healthcare worker will be required to pick up the take-out food from the access point.

- **Food for personal consumption** - Food prepared in a household where no occupants are under isolation can be brought in for consumption.
- **Pre-packaged food** from the manufacturer can be brought in and stored in approved locations.

The consumption and storage of food must follow [Infection and Prevention and Control Routine Practices](#) where the food is kept and consumed in non work areas such as lunch rooms.

## Screening Process - Dropped Off Patient / Designated Visitor Personal Items

April 7, 2020



Accepted: (Easily cleaned and disinfected with a hospital provided wipe)	Not Accepted: (Cannot be cleaned and disinfected with a hospital provided wipe)
<ul style="list-style-type: none"> <li>• <b>Electronic devices and accessories</b> - Cell phones, laptops, tablets, E-readers, chargers</li> </ul>	<ul style="list-style-type: none"> <li>• <b>Clothing</b> – arrangements can be made with healthcare staff in advance if clothing is required for discharge</li> </ul>
<ul style="list-style-type: none"> <li>• <b>Food and beverages</b> in sealed manufacturer’s packaging (e.g.: granola and chocolate bars, bottled water and soda pop)</li> </ul>	<ul style="list-style-type: none"> <li>• <b>Food and beverages that are NOT in sealed manufacturer’s packaging and cannot be cleaned</b> (e.g.: paper coffee cups, food prepared at home)</li> </ul>
<ul style="list-style-type: none"> <li>• <b>Medical aids/equipment</b> – hearing aids, glasses, dentures in container, wheelchairs, braces, canes, walkers, baby car seat, etc.</li> </ul>	<ul style="list-style-type: none"> <li>• <b>Paper/cardboard products</b> – Books, magazines, newspapers, cards</li> </ul>
<ul style="list-style-type: none"> <li>• <b>Personal toiletries</b> in sealed manufacturer packaging (e.g.: toothpaste, toothbrush in package, shampoo, etc.)</li> </ul>	<ul style="list-style-type: none"> <li>• <b>Flowers</b></li> </ul>
<ul style="list-style-type: none"> <li>• <b>Footwear</b> that can be wiped cleaned</li> </ul>	

